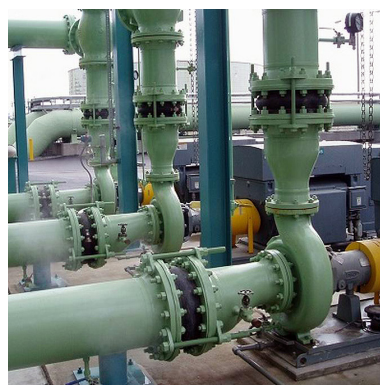




**CMO VALVES**  
manufacturing the valve you need

# 41A SERIES



## FABRICATION RANGE *RUBBER EXPANSION JOINTS*

### UTILIZATION:

- Rubber expansion joints used to absorb and recuperate the deformations in the pipeline. Their design allows the longitudinal, transversel and angular movements.
- It has minimum head loss, it is total bore and 100% water tight.

# 41- SERIES

## RUBBER EXPANSION JOINTS

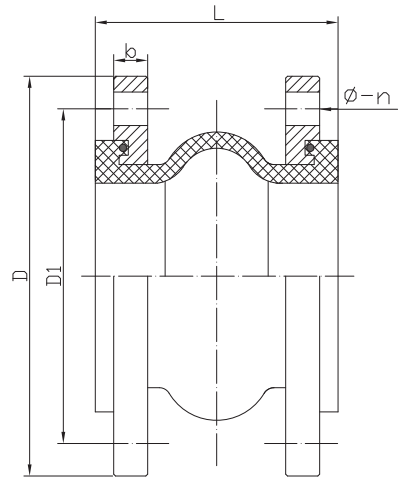


### MAIN FEATURES:

- Minimum head loss.
- Full bore.
- 100% water tight.
- Bidirectional flow.
- No gaskets needed for installation.
- Breaking pressure over 60 bar.
- Working temperature between -10°C and 115°C.
- For temperatures over 80°C, the maximum working pressure is 3 bar.

### STANDARDS APPLIED:

- Hydrostatic tests according to EN 12266-1, class A.
- Side flanges according to ISO 7005-1.

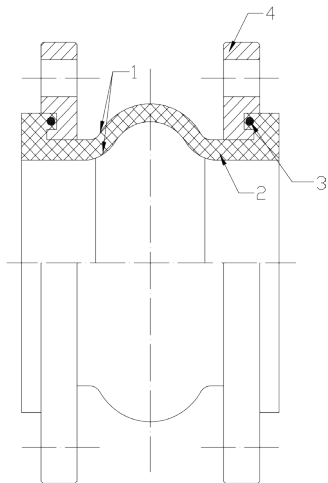
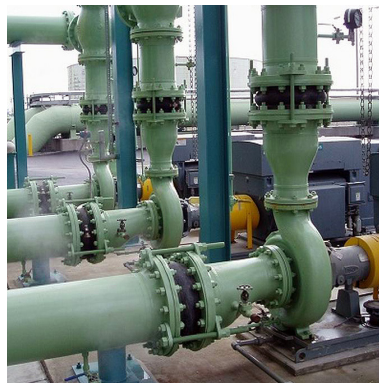


### SINGLE WAVE DIMENSIONS

DN	L	Weight	PN 10				PN 16				DISPLACEMENT			
			D	D1	b	Ø-n	D	D1	b	Ø-n	Extens.	Compr.	Transv.	Angle
32	95	2,6	140	100	14	18-4	140	100	14	18-4	6	9	9	15°
40	95	3,1	150	110	14	18-4	150	110	14	18-4	6	10	9	15°
50	105	4,2	165	125	15	18-4	165	125	15	18-4	7	10	10	15°
65	115	5,2	185	145	15	18-4	185	145	15	18-4	7	13	11	15°
80	130	6,2	200	160	17	18-8	200	160	17	18-8	8	15	12	15°
100	135	7,5	220	180	17	18-8	220	180	17	18-8	10	19	13	15°
125	170	10,3	250	210	19	18-8	250	210	19	18-8	12	19	13	15°
150	180	12,8	285	240	19	22-8	285	240	19	22-8	12	20	14	15°
200	205	18,6	340	295	21	22-8	340	295	21	22-12	16	25	22	15°
250	240	27,2	395	350	23	22-12	405	0355	23	26-12	16	25	22	15°
300	260	34,5	445	400	22	22-12	460	410	24	26-12	16	25	22	15°
350	255	45,6	505	460	22	22-16	520	470	26	26-16	16	25	22	15°
400	255	58,4	565	515	22	26-16	580	525	28	30-16	16	25	22	15°
450	255	68,0	615	565	22	26-20	640	585	28	30-20	16	25	22	15°
500	255	90,2	670	620	24	26-20	715	650	30	33-20	16	25	22	15°
600	260	122,5	780	725	23	30-20	840	770	31	36-20	16	25	22	15°

# 41- SERIES

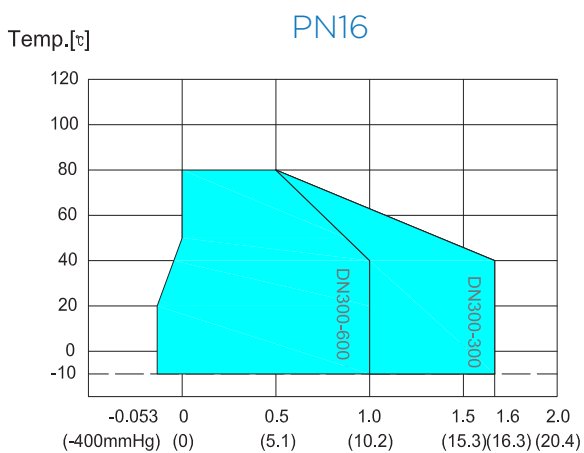
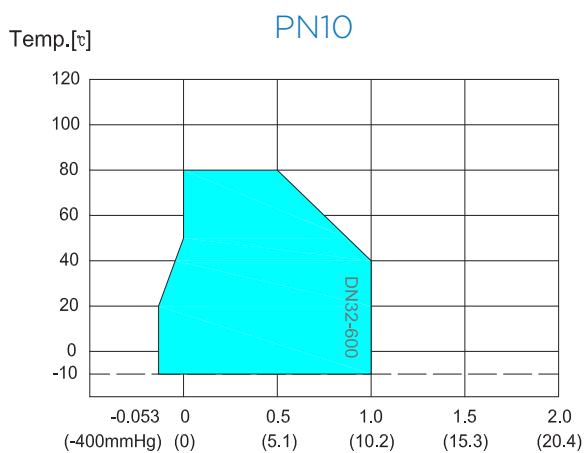
## RUBBER EXPANSION JOINTS



### DESCRIPTION

<b>1</b>	<b>RUBBER</b>	EPDM / NBR
<b>2</b>	<b>KEY FRAME</b>	CORD FABRIC
<b>3</b>	<b>PRESSURIZED RING</b>	STEEL WIRE STRAND
<b>4</b>	<b>FLANGE</b>	Q235

### WORKING PRESSURE / TEMPERATURE TABLE

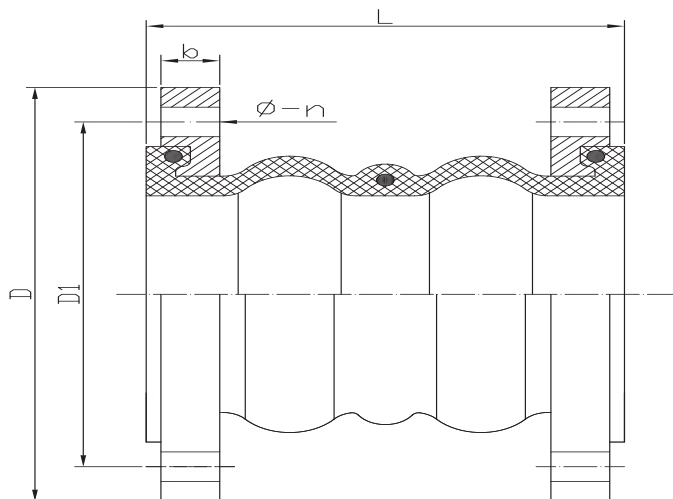
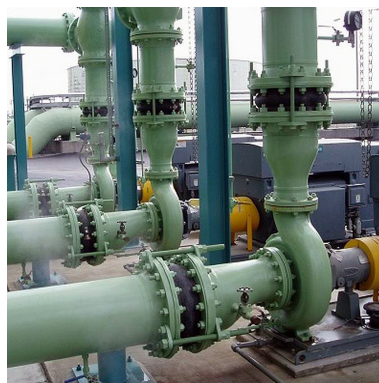


### SINGLE WAVE DIMENSIONS

DN	L	D	PN 10			D	PN 16			DISPLACEMENT			
			D1	b	Φ-n		D1	b	Φ-n	Extens.	Compr.	Transv.	Ang.
700	260	895	840	30	30-24	910	840	36	36-24	6	9	9	15°
800	260	1015	950	32	33-24	1025	950	38	39-24	6	10	9	15°
900	260	1115	1050	34	33-28	1125	1050	40	39-28	7	10	10	15°
1000	260	1230	1160	34	36-28	1255	1170	42	42-28	7	13	11	15°

# 41- SERIES

## RUBBER EXPANSION JOINTS



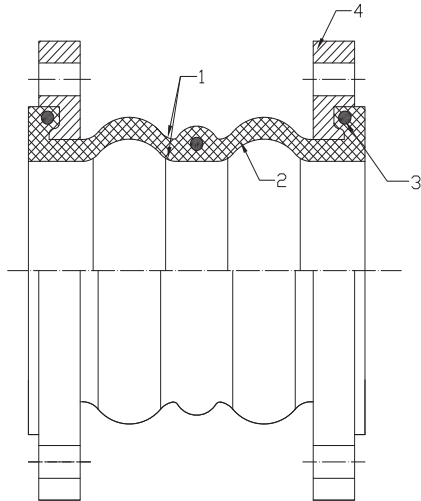
### DOUBLE WAVE DIMENSIONS

DN	L	Weight	PN 10				PN 16				DISPLACEMENTS			
			D	D1	b	Φ-n	D	D1	b	Φ-n	Extens.	Compr.	Transv.	Ang.
40	175	3,1	150	110	14	18-4	150	110	14	18-4	10	20	20	15°
50	175	4,3	165	125	15	18-4	165	125	15	18-4	10	20	20	15°
65	175	5,4	185	145	15	18-4	185	145	15	18-4	10	20	20	15°
80	175	6,5	200	160	17	18-8	200	160	17	18-8	10	20	20	15°
100	225	8,1	220	180	17	18-8	220	180	17	18-8	15	30	25	15°
125	225	10,8	250	210	19	18-8	250	210	19	18-8	15	30	25	15°
150	225	13,4	285	240	19	22-8	285	240	19	22-8	15	30	25	15°
200	325	21,1	340	295	21	22-8	340	295	21	22-12	20	40	30	15°
250	325	27,3	395	350	23	22-12	405	355	23	26-12	20	40	30	15°
300	325	31,0	445	400	22	22-12	460	410	24	26-12	20	40	30	15°

The images and drawings are non contractual.  
The specifications of the shown products could vary without previous notice.

# 41- SERIES

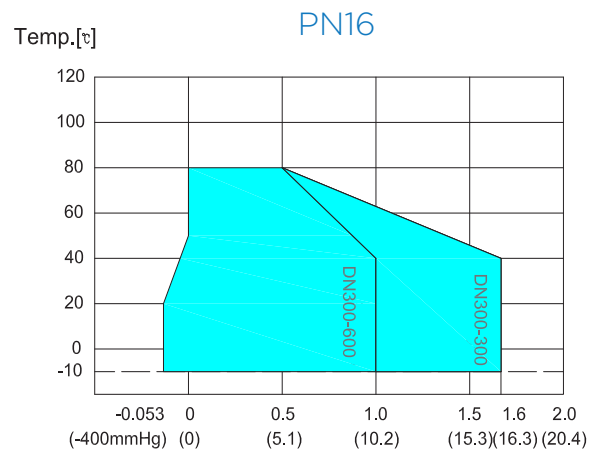
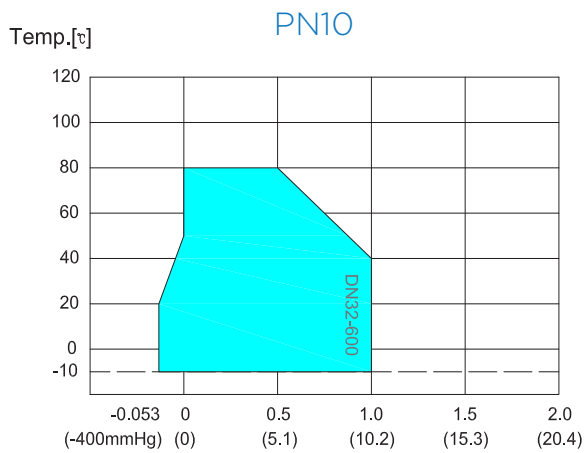
## RUBBER EXPANSION JOINTS



### DESCRIPTION

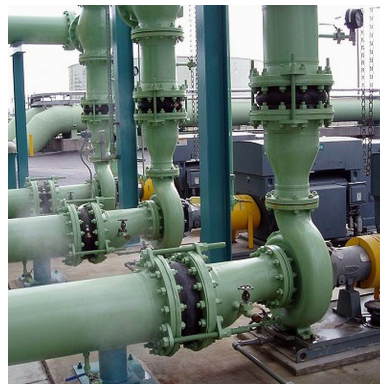
1	RUBBER	EPDM / NBR
2	INTERNAL REINFORCEMENT	FABRIC
3	PRESSURE RING	STEEL WIRE
4	FLANGES	Q235

### WORKING PRESSURE / TEMPERATURE TABLE

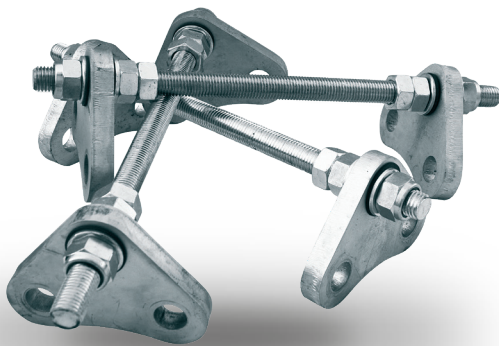


# 41- SERIES

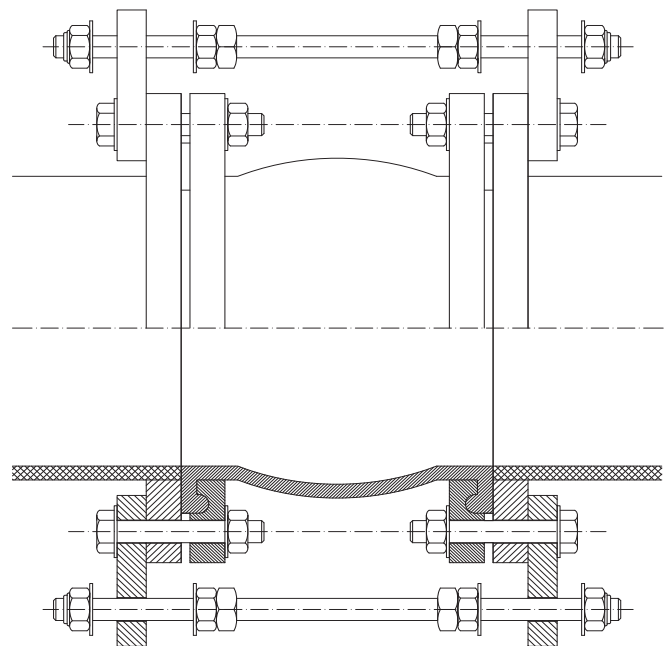
## RUBBER EXPANSION JOINTS



### SECURITY TIE RODS



For the correct working of the rubber expansion joints, security tie rods must be installed according to the tables below.



#### NUMBER OF SECURITY TIE RODS ACCORDING TO THE PN

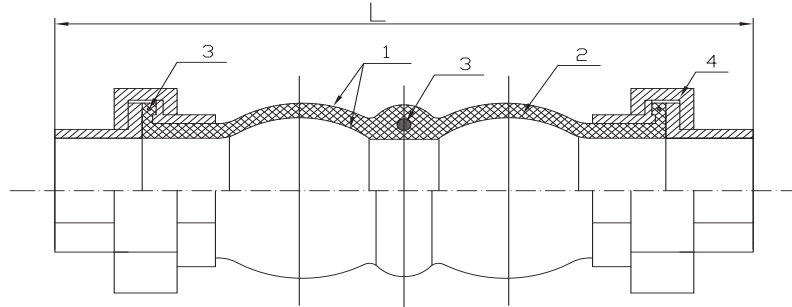
DN	40	50	65	80	100	125	150	200	250	300	350	400	450	500	600
PN10	-	-	-	-	-	-	-	4	4	4	4	4	4	4	4
PN16	2	2	2	2	2	2	2	2	2	4	4	4	4	4	4

#### NUMBER OF SECURITY TIE RODS ACCORDING TO THE WORKING PRESSURE

DN	700	800	900	1000	1100	1200	1300	1400	1500	1600	1800
4 TIE RODS	7 BAR	6BAR	6BAR	6BAR	6BAR	6BAR	5 BAR	5 BAR	4 BAR	4 BAR	3 BAR
6 TIE RODS	-	-	-	-	-	-	6 BAR	6 BAR	6 BAR	6 BAR	6 BAR

# 41- SERIES

## RUBBER EXPANSION JOINTS



### THREADED RUBBER EXPANSION JOINTS DIMENSIONS

DN	L	Weight	DISPLACEMENTS			
			Extens.	Compr.	Transv.	Ang.
15	200	0,7	6	22	22	30°
20	200	0,9	6	22	22	30°
25	200	1,2	6	22	22	30°
32	200	1,4	6	22	22	30°
40	200	2,0	6	22	22	30°
50	200	2,5	6	22	22	30°
65	225	3,7	6	24	24	30°
80	225	5,0	6	24	24	30°

DESCRIPTION		
1	RUBBER	EPDM / NBR
2	INTERNAL REINFORCEMENT	FABRIC
3	PRESSURE RING	STEEL WIRE
4	THREADED ENDS	CAST IRON

### WORKING PRESSURE / TEMPERATURE TABLE

